

Appendix – Technical Specifications

Table of Contents

- I. Project Summary
- II. Sample Project Schedule

Appendix - Kennedy 13kV T11 Switchgear

Kennedy 13kV T11 Switchgear Addition Project (In Service Date of 11-30-2026)

Install a new 13.2kV T11 switchgear building consisting of one (1) bus tie breaker, eight (8) feeder breakers and one (1) source breaker. The new switchgear bus and all non-feeder breakers shall be rated for 3000 amps minimum. Bus tie conductors will be rated for 2450 amps minimum. Feeder breakers must be rated for 1200 amps minimum. See **Figure 6**.

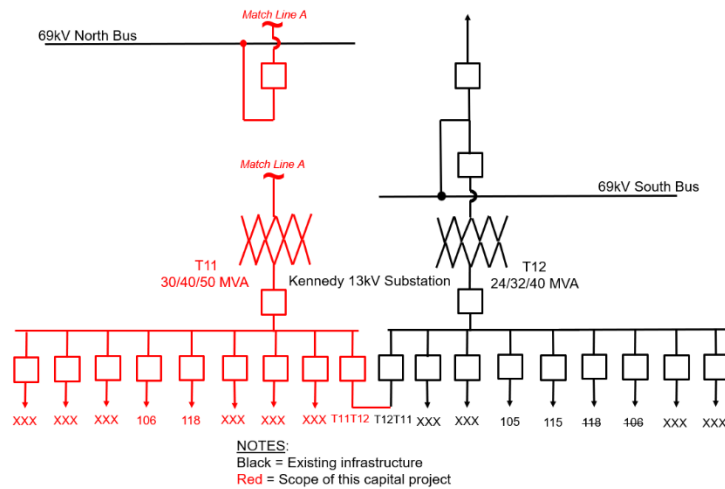


Figure 1

Construct a new tie conduit system between the T11 and the new T11 switchgear. The use of four (4) parallel conductors for the T11 bus is assumed. Six-inch (6") diameter conduits shall be used between tie breaker termination locations. See **Figure 3**. Pull four (4) parallel runs of 750CU (or higher ampacity substitute) between breakers.

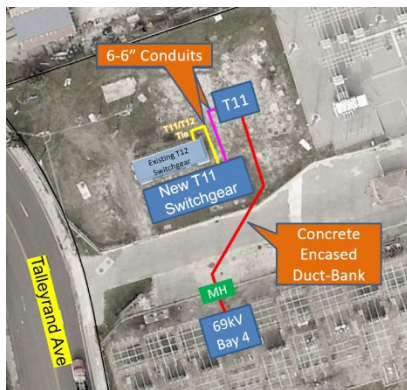


Figure 2



Figure 3

Feeder breakers to be rated for 1200 amps minimum. The 13.2kV new gear will have at least 2 - 6" conduits per breaker stubbed out toward Talleyrand Ave. This will be ten (10') feet from the new switchgear building. See **Figure 5**.

Please note that locations and interconnection details are only approximations and will be finalized by Substation Engineering. All switchgear should have adequate openings to accommodate up to 6 - 6" conduits if needed.

[illegible]

[illegible]